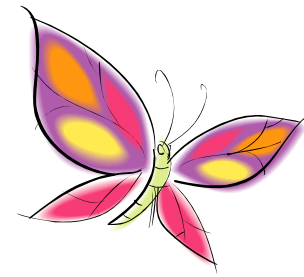


HAPPY SPRING PROVIDERS FOOD PROGRAM



April 2009

*Each month please read you newsletter
as it will contain updated information
or any new regulations.*

Have you changed your e-mail address recently? If so, please let us know. Please send an e-mail to Jill at:

Jill@providerresources.org so we can make the change in our computer.

INFANT MENUS

The Dept. of Education is requiring that when you have 2 infants, only 1 infant's food can be recorded on the menus. The 2nd infant's food is to be recorded on a separate paper, although all the attendance is recorded on the bubble menus. The office has come up with blank infant menu sheets that can help with this process.

If you currently record your menus on-line there will be no changes in the way you already record.

www.providerresources.org

GROCERY BAG

As a thank you to all of our providers, we will be giving each of you a reusable grocery bag with the CACFP logo. Your home monitor will be bringing it with her at your next visits.

FOOD STORAGE

The following is a review of the USDA policies.

After you have opened a box of cereal or crackers that are for the day care children, the contents need to be placed in either a zip-lock bag or plastic container. This not only keeps the contents fresher longer but also helps bacteria from entering the food.

Leftovers in your refrigerator need to be placed in a container or covered with plastic wrap, not foil

Cans and bottle juices cannot be stored on the floor.

Pet food cannot be stored with your day care food.

WHAT'S NEW WITH ENROLLMENT FORMS

The Dept. of Education is focusing on enrollments. When a new child starts in your day care you need to include the enrollment form with all your paperwork that you give the child's parent. The enrollment can be dated prior to the child starting. If you wait until the child starts in your day care to have the parent fill out the form, it cannot be dated any further than 1 day from their start date, otherwise you will not be able to start claiming the child until the date the parent signed the form.

When enrolling a new child, please make sure all the information is filled out completely. If they are school

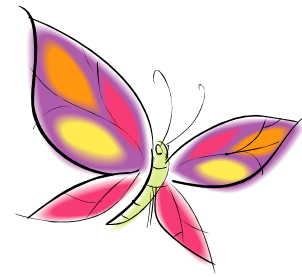
E-MAIL

The Child and Adult Care Food program is operated in accordance with the state and USDA policy which does not permit discrimination because of race, color, national origin, sex, age or disability. To file a complaint of discrimination, write USDA, Director, Office of Civil Rights- 1400 Independence Ave. S.W., Washington D.C. 20250-9410 or call (800) 795-3272 (voice) or (202) 720- 6382 (TTY). USDA is an equal opportunity provider and employer (6/08)





HAPPY SPRING
PROVIDERS FOOD PROGRAM
April 2009



age, we need to know their grade and what time they leave for school and their return time.

Any time a day care child moves, their name or their parents name changes, or their phone number changes we need that information so we can update their information in our system. We now have a form you can use to update this information. Please ask your home monitor for one.

TRAININGS

Everyone should have received their first training. If you haven't received it please call the office. If you haven't mailed it back, it is due in no later than April 30th. If you mailed it in but haven't received your certificate please check to see that we have received it.

Remember- when you renew your CPR send us a copy. This counts as part of your training hours.

The CACFP is up for reauthorization. Please contact your Federal congressman by phone or letter to let them know how valuable this program is.

To find out who your congressman is go to:

http://www.house.gov/house/MemberWWW_by_State.shtml#ma

